



### This edition of the Newsletter features:

#### News from the Village

A good harvest.....pg 1

#### Leprosy news:

New cases  
.....pg 1

Mobile eye clinic  
..... pg 2

The River Rufiji causes  
trouble again  
..... pg 2

Death of a Villager  
.....pg 2

May Day celebrations on  
the Island of Mafia  
.....pg 3

#### Notes from the Trustees

How to hear the voice of  
Father Robin Lamburn  
after all these years  
.....pg 4

Finances  
..... pg 5

Webmaster needed  
..... pg 5

Contacts  
.....pg 6

## News from the Village

sent to us by Salum Kipoloya,  
the orthopaedic shoemaker

### *Dear Readers*

I hope this Newsletter finds all of you in good health.

Here in Kindwitwi, everyone is happy and looking forward to an unexpectedly good harvest. As you know, like neighbouring villages, we grow most of our own food, mainly maize and rice. And then some of us grow other things, such as simsim. These increase our income, and we call them *cash crops*.

My wife is one those villagers who successfully grew simsim this season.



Here she is seen winnowing the simsim seeds from bundles to prepare them for selling in the market.

### Leprosy News

Since I started gathering material for this Newsletter, [three](#) new patients have been detected. All have multi-bacillary leprosy and came with disability grade one, which means (as many of you will

remember) that they will be left with numb patches that they will have to be careful not to damage. We can provide gloves and sandals to protect their hands and feet.

*When you have read this Newsletter, please would you pass it on to a friend?  
This way, we can tell more people of the good work of RLT and Kindwitwi.*

## ... Leprosy News continued

### New mobile eye clinic comes to Utete

Leprosy often affects the eyes and, in order to have an eye check-up, people in Kindwitwi usually have to travel all the way to Dar es Salaam. Recently, however, some eye check-ups have become available in the near-by hospital in Utete. This saves us a lot of money and is a great help to the patients.

The new eye check-up is possible because **the Bilal Muslim Mission of Tanzania**, based in Dar es Salaam, has provided a mobile clinic that travels all over the country.

So far, eight patients can be cured by medication, but the other two will need operations.



*Here you can see two elders from our village who are waiting for screening: Habiba Mpondi and Zaituni Mwela.*

## The never-ending saga of the wayward Rufiji River

From past Newsletters:

- **March 2011** 'The mighty Rufiji River'
- **September 2014** 'Well, once again, the river caused us terrible problems'

... and our problems with the river continue to this day.

The recent rains were very welcome, but, as you can see from this picture, the Rufiji is very swollen. Not only that, but the depth of the river has changed so we no longer know where it is deep and where it is shallow.

AND we are still having to use the small, fibre-glass boats, as the big ferry has yet to be mended.



**Some things never change!**

We are sorry to have to tell you that one of our long term ex-leprosy patients, Mzee Matyanga, died of heart failure on 21 June. He was being nursed at Utete Hospital.

He leaves a widow  
Mama Somoe Msham.

**May he rest in peace**



**Mzee Matyanga relaxing on his veranda in Kindwitwi**



# May Day Celebrations 2015

You may remember that, in Tanzania, we join with workers worldwide to celebrate this day. It is a day when employers give prizes to their best workers, either money or furniture.

This year, the prize for the best worker from Kindwitwi Leprosy Care and Community Development Association (KLCCDA) was given to the Centre Manager: Abdallah Nguyu.

**[Editorial comment:**  
*Well done, Abdallah!]*

However, Abdallah did not go to collect his prize, because the celebrations were being held on the island of Mafia, and Abdallah did not want to spend four hours on such a long sea journey.

This meant that Frank Taji

and I represented him at these important celebrations, because we are the leaders of the Kindwitwi branch of the Tanzania Union of Government and Health Employees (TUGHE). The aim of the TUGHE is to ensure workers' rights and a good work ethic between employer and employee(s).



## The Celebrations begin!



This year, as well as the usual speeches, games, dancing and singing, we took the opportunity to remind people about more serious matters, like being aware of HIV/AIDS.



This banner says:

**VOLUNTARY AIDS/HIV TESTING  
AT THE WORKING PLACE**

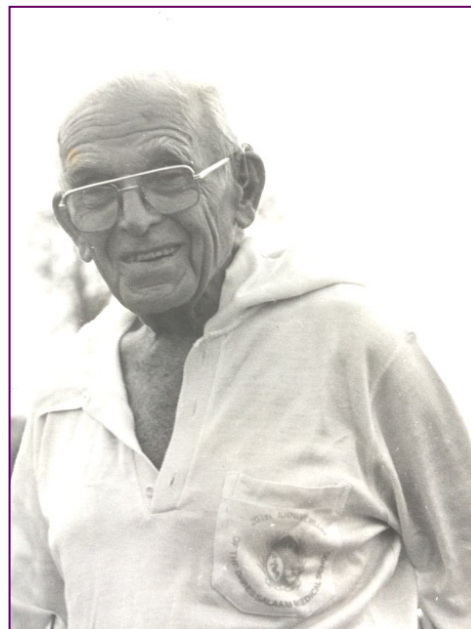
And here is Frank Taji setting a good example to other workers by having an HIV / AIDS test.



*My best wishes to you all  
Safum*

# Notes from the Trustees

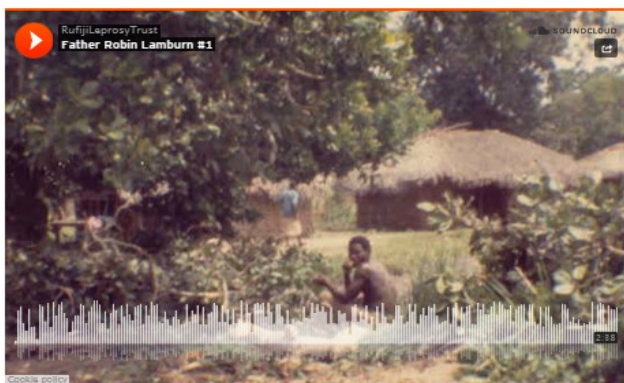
*Listen to the actual voice of  
**Father Robin Lamburn,**  
as he tells the story of his involvement with  
Kindwitwi. His compassion and down-to-earth  
approach to life shine through and you will not  
fail to be moved. Truly, he was inspirational.*



## How to listen

Here is the announcement of the first two clips on the RLT website, where you can access, not only the sound recording, but also the transcripts.

**Audio 1 - About the site and deciding to get involved in 1963 (poor sound quality)**



**Audio 2 - Initial problems with taking over the site, and stigma**



For those of you who would prefer to read the transcript please see our [News Archive](#). Due to the sound quality we are unable to give you the full details but hope this gives you a flavour of the recording.

For those of you who would prefer to read the transcript, please see our [News Archive](#). Due to the sound quality, we are unable to give you the full details but hope this gives you a flavour of the recording.



[www.RufijiLeprosyTrust.org](http://www.RufijiLeprosyTrust.org)

## From tape recorder to the worldwide web

For many years, stored in our archives, there has been a wonderful tape recording of Father Robin talking about his life in Kindwitwi. It was recorded by Geoff O'Donoghue in Kindwitwi, when he was the Project Officer there. Geoff is now a co-chair of the Trust.

On it, Father Robin describes how he came to be involved in Kindwitwi and the difficulties and rewards of helping all those affected by leprosy in that remote area.

Now, thanks to the skill and persistence of Trustee Rachael Green and her husband, Jim, the tape has been digitised, so that it can be made public.

Until December, we shall be releasing a short clip every two weeks through our website, Facebook and Twitter. We shall also be providing a transcript of the recordings, as some have become degraded over time and are of a lower quality.

In December, we shall release the whole recording as a YouTube film, with photographs and memories. If you are inspired by the recordings and would like to share *your* memories, photographs or letters, please email Rachael ([rachael.l.green28@gmail.com](mailto:rachael.l.green28@gmail.com)).

**Enjoy your listening!**

## Finances

We hope you might welcome some information on how RLT raises and spends the money that you so generously donate.

### *Richard, our Financial Trustee, tells us that ...*

... the Annual Report and Accounts for the year ended 30 September 2014 have been sent to the Charity Commission and will shortly appear on their website, where you can see them at: [www.charitycommission.gov.uk/find-charities/](http://www.charitycommission.gov.uk/find-charities/)

using the advanced search facility and the full name Rufiji Leprosy Trust. At the same time, we understand that the updated Constitution we mentioned at **Note 3** in the last Newsletter will also be posted.

### *Trustee Rachael is busy ...*

... applying for grants, so that we can support the efforts being made by KLCCDA in education and welfare.

### *At their recent meeting, the Trustees resolved to finance ....*

... a two-day conference for **sixteen** health workers in the Rufiji Area. This will be hosted and organised by the management of the Kindwitwi staff under the leadership of Dr Nnally. The Health Workers are nurses who work in the outlying area. They will be updated on the diagnosis of leprosy (which is difficult to recognise) and on the treatment and after-care of those suffering from leprosy.

*We hope you will agree that this is a very good use of our limited resources!*

So, as you can see, your Trustees, who are all voluntary, are working diligently on behalf of the people in Kindwitwi.

**NB** We are still looking for a **web-master** and hope that there is a reader amongst you who would like to join us in this satisfying and worthwhile endeavour ..... If so, please contact the Editor: Val Mead on 01225 445180 / 07505 77 4192 or [mead.val@gmail.com](mailto:mead.val@gmail.com).

*Our best wishes to you all from the Trustees*

## How to find us online

### OUR LOGO

Its simple design gets home the message and is in the colours of the Tanzanian flag.



### OUR WEBSITE

spreads the word about our good work:  
[www.RufijiLeprosyTrust.org](http://www.RufijiLeprosyTrust.org)

### SOCIAL MEDIA

In between newsletters we like to ensure we are keeping all of our friends and supporters updated on the work of RLT and life in Kindwitwi.



<https://www.facebook.com/rufijileprosy>



[www.twitter.com/rleprosytrust](http://www.twitter.com/rleprosytrust)

**SINCE RLT STARTED** using both Facebook and Twitter, we have reconnected with lots of our younger supporters and GAP-year volunteers to Tanzania.

### DONATE

You can donate through our Website using CAF, debit cards and major credit cards. This is now an important tool for RLT and is supported by CAF online.

**CAF** Charities Aid Foundation





# Contacts and information

## In the UK

### to make a donation contact:

**Mr Richard Luxmore**  
Financial Trustee

Cherry Acre, Purley Village,  
PURLEY-ON-THAMES  
Berkshire RG8 8AF

Email: richluxmore@gmail.com  
Tel: +44 (0) 118 984 5261

Make cheques payable to  
Rufiji Leprosy Trust.

Banker's Order forms  
and Tax Declarations  
are available either on  
request or from the RLT  
website.

### to receive the RLT Newsletter contact:

**Mrs Val Mead**  
Trustee

17 Harbutts  
Bathampton  
BATH  
Somerset BA2 6TA

Email: mead.val@gmail.com  
Tel: +44 (0) 1225 445180

The Editors are always  
pleased to hear from you  
and we should welcome  
any contributions and notes  
about your visits to or  
memories of Tanzania.

## RLT The Rufiji Leprosy Trust is registered in the UK, Charity no 286242

### THE PATRON

Professor the Baroness Sheila Hollins

### THE TRUSTEES

#### President

Dr Alexander de Waal OBE

#### Co-Chair

Dr Sarah Feather  
Mr Geoffrey O'Donoghue

Mr Nicholas Bowley  
Ms Jenny Cosgrave  
The Reverend Victor de Waal  
Mrs Rachael Green  
Mr G W W Laverton MBE  
Mr Richard Luxmore  
Mrs Valerie Mead  
Mr William Powell  
Mr Henry Wilding

## In Tanzania

### to arrange a visit to Kindwitwi contact:

**Mr Abdallah Nguyu**  
Centre Manager

Email: nguyua@gmail.com  
Mob: +255 0784 798 529  
*Texting is usually best*

### Postal address:

Kindwitwi LCCDA  
c/o Box 948  
Dar es Salaam  
Tanzania

### Field address:

Kindwitwi Leprosy Care Centre  
Kindwitwi  
Utete  
Rufiji

## KLCCDA Kindwitwi Leprosy Care and Community Development Association is registered in Tanzania, Certificate No 58593

### THE DIRECTORS

#### Chair

Mr Burchard Rwamtoga

Mr Martin Hall, CEO International School of Tanganyika  
Mr Daniel Masunzu, Ministry of Health and Social Welfare  
Mr Omari Mtumbi, Kindwitwi Village Chairman  
Mr Peter Sasi, Dental Surgeon at Utete Hospital

### MANAGER and SECRETARY

Mr Abdallah Nguyu

RLT was set up in 1982 by founding trustees, Dr Alex de Waal OBE, The Rev Victor de Waal, Mr G W W Laverton MBE and the late Lord Pilkington, to continue and extend the work of Canon Robin Lamburn, who relocated to Rufiji in 1968 and, until his death in 1993, devoted himself to promoting a good life for the people in Kindwitwi Leprosy Village. Today, as KLCCDA becomes increasingly autonomous, RLT's primary function is to support KLCCDA in its work with the patients and people of Kindwitwi and the surrounding area. This work includes not only KLCCDA's leprosy work but also their efforts to gain self-sufficiency for themselves and those in the immediate Rufiji district, in cooperation with the Tanzanian Government authorities.